

OJEU FINDER

Running the OJEU software on 64bit Windows 7

Introduction

With the increasing number of computers running 64bit versions of Microsoft Windows it poses many problems with older software and hardware products. Unfortunately the OJEU software that was pioneered in the early 90's is not compatible with 64bit operating systems. With the introduction of 64bit Windows 7 Microsoft has released what is known as "Windows XP Mode". It is a piece of software which allows you to run a virtual copy of Windows XP alongside your current 64bit Windows 7 installation. It may sound like a daunting task at first but it really is quite simple to setup and use. This guide will take you through the process step by step of installing Windows XP Mode and setting up the OJEU software to run on your new 64bit computer.

This guide will not serve as a complete manual to the OJEU software itself. It is assumed you are already familiar with the software and is suggested you read the user guide on our website (ojeu.com). The aim of this guide is to familiarise you with Windows XP Mode and how to get the OJEU software to run inside it.

Please note: For those of you still using a 16bit or 32bit Microsoft operating system (Windows 3.11, MS DOS, Windows XP, Windows Vista 32bit, Windows 7 32bit) there is no need to follow this guide. The OJEU software is fully functional on any Microsoft 16bit or 32bit operating systems.

Downloading and Installing Windows XP Mode

First you must launch your web browser and go to the Windows XP Mode website. The website is currently located at the following url:

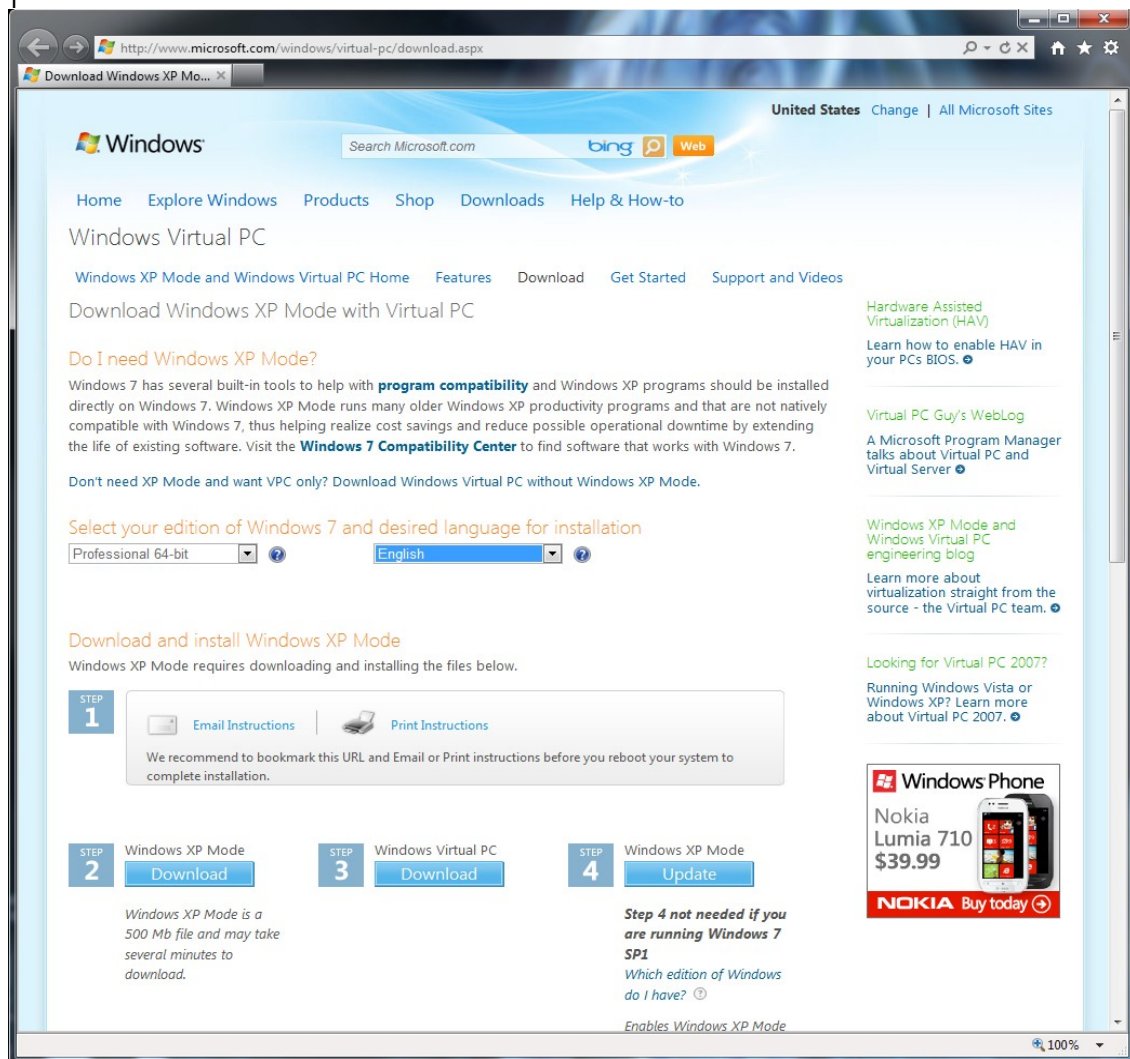
<http://www.microsoft.com/windows/virtual-pc/download.aspx>

Before you begin the website will ask you to select which version of Windows 7 you are using and which language you wish to download the software in. If you are unsure please check with your IT Technicians. Once you have made your selection you can begin the installation process.

It is important that you make sure you install the software in the following order.

- Step 1: Download and install "Windows XP Mode".
- Step 2: Download and install Windows Virtual PC
- Step 3: Download and install "Windows XP Mode Update"

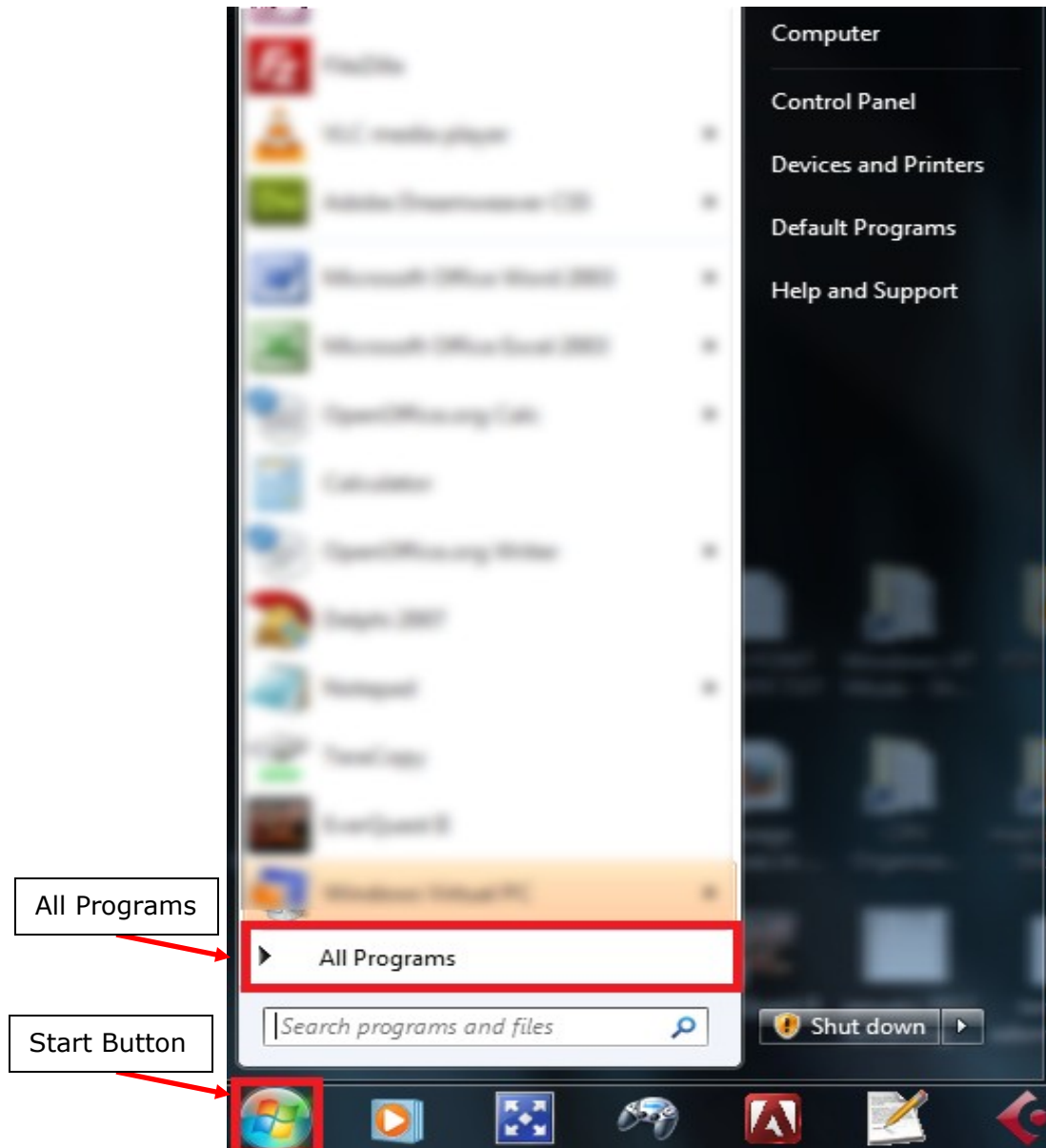
The screenshot below shows the "Microsoft Windows XP Mode" website displayed in Internet Explorer 9.



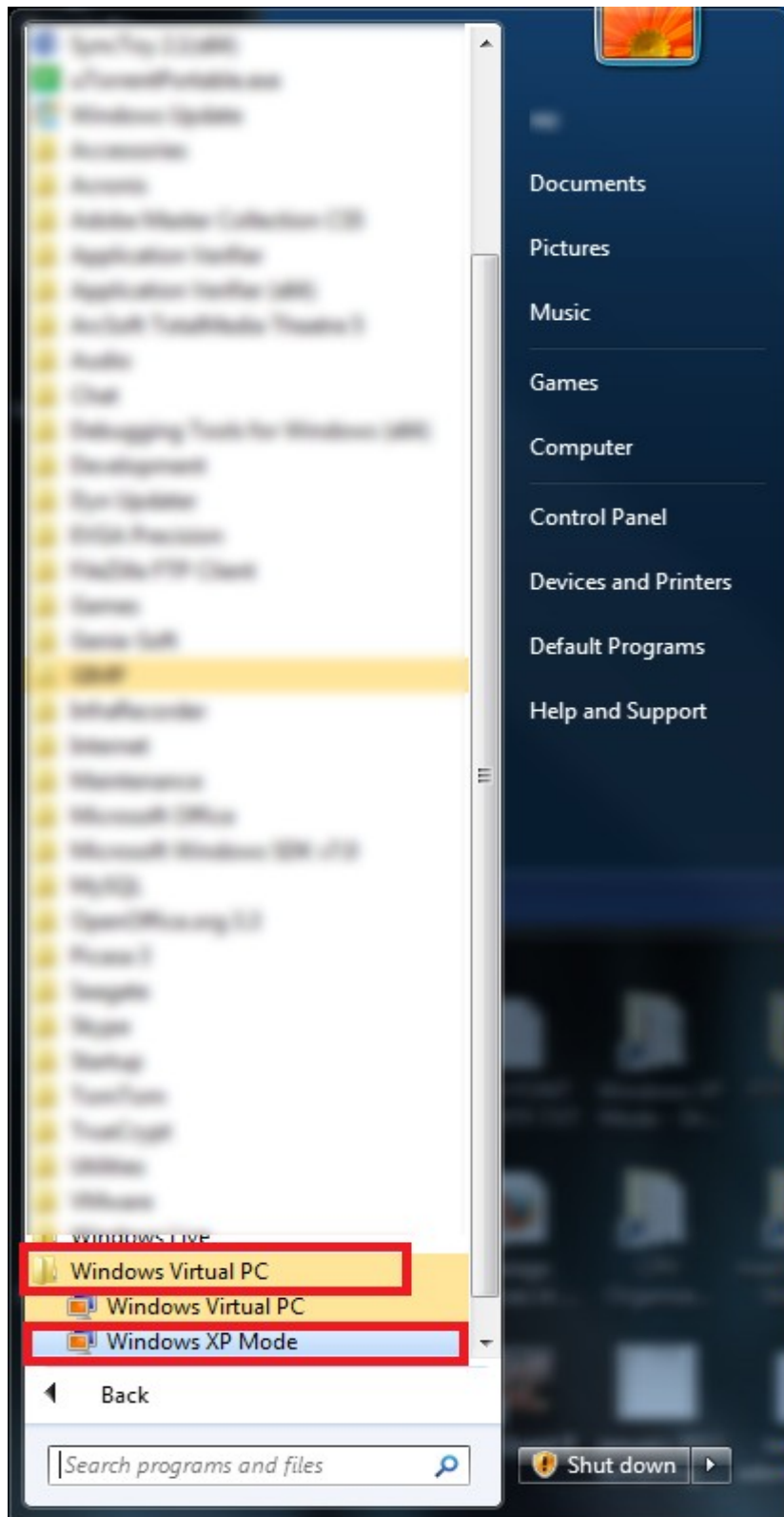
Launching Windows XP Mode

After a successful installation of Windows XP Mode and Virtual PC you are now ready to run the software for the first time. To do this start by clicking the Windows 7 start button and selecting the "*All Programs*" menu.

Note: By default the start button is in the lower left hand corner of your screen. This may appear different if you have customised your interface.



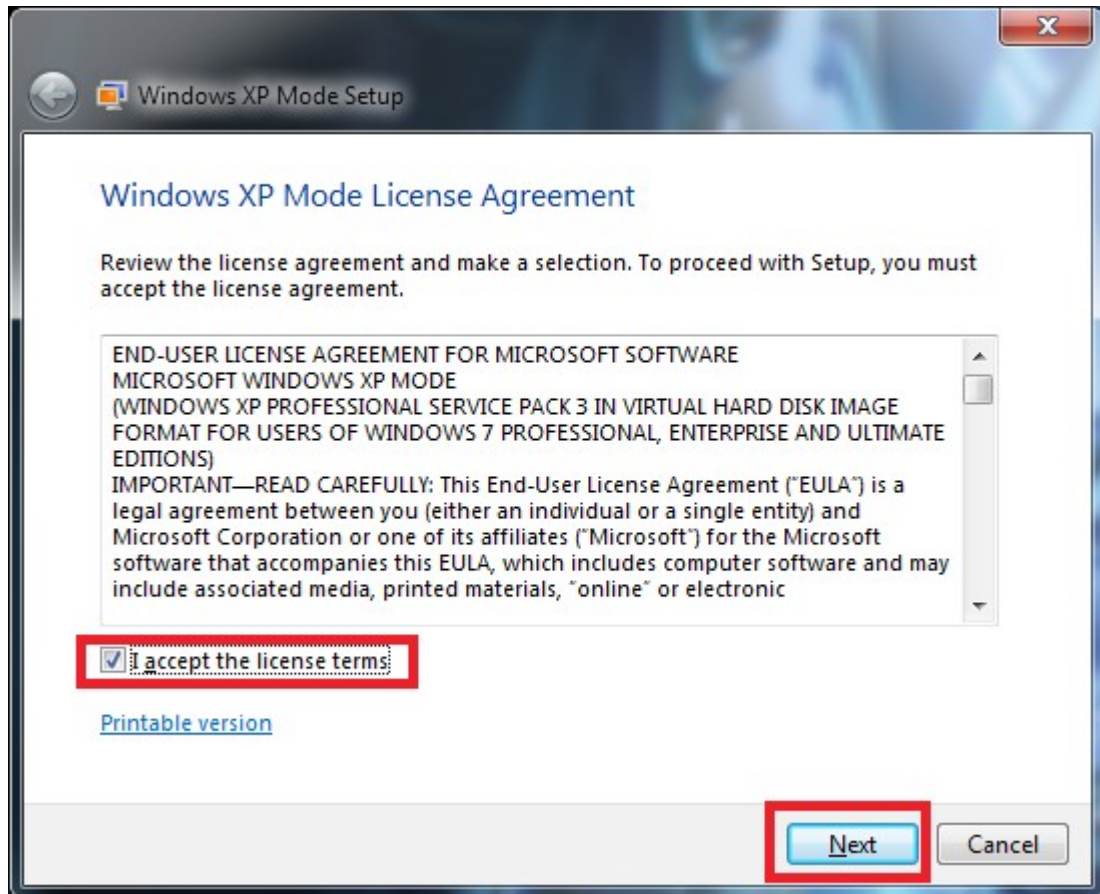
Now locate the folder called "*Windows Virtual PC*" and click it open it. Once opened click on the application "*Windows XP Mode*".



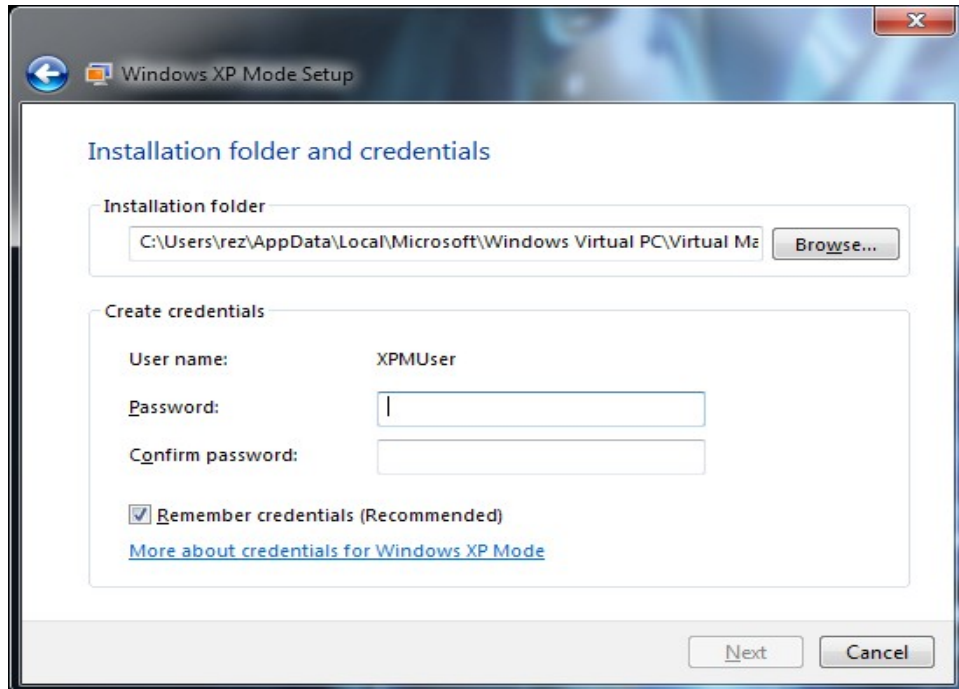
Configuring XP Mode for the First Time

If this is **not** the first time you have run Windows XP Mode then skip to the section on using Windows XP Mode.

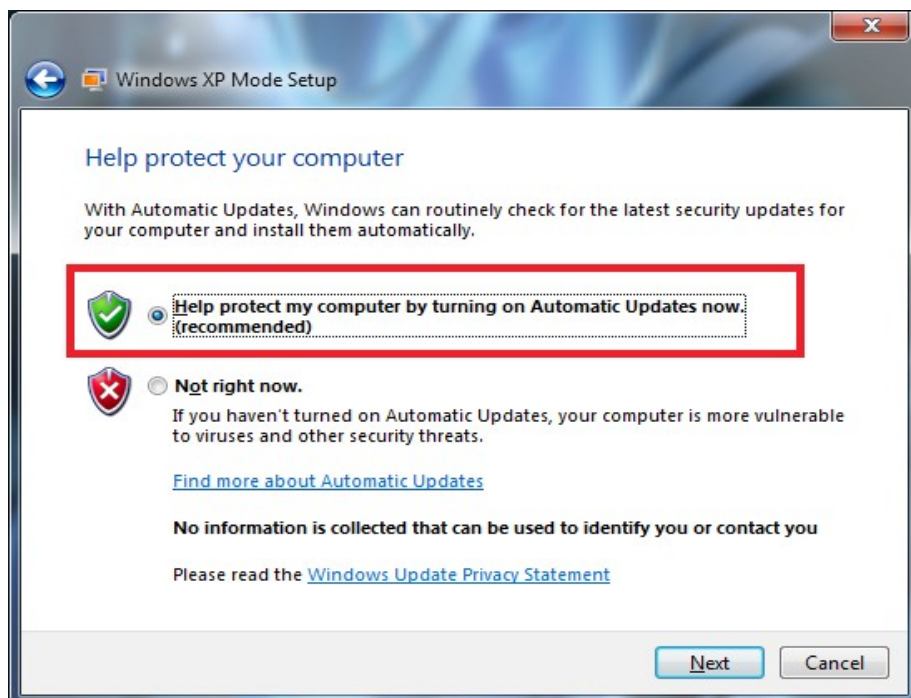
If this is the first time you have launched the software then Windows XP Mode will guide you through the setup process. The first screen you will be asked to accept the license terms. You must tick the box followed by clicking the *next* button.



You will now be asked to enter a password for the new virtual machine. This can be anything you like and will be used in future when logging on to the machine on performing administrative tasks. Be sure to keep a note of this. Once you have chose a password click *next*.



Next you will be asked if you would like to turn on Automatic Updates for the virtual machine. It is highly recommended you choose to do so. This will keep any security threats at bay and help stop any potential viruses. Once you have made your choice click *Next*.



Windows XP Mode will now let you configure and share drives and folders between the virtual machine and Windows 7. Unless you know exactly what you are doing I recommend that you leave these settings alone and simply click "**Start Setup**". The setup process will automatically configure itself for you.



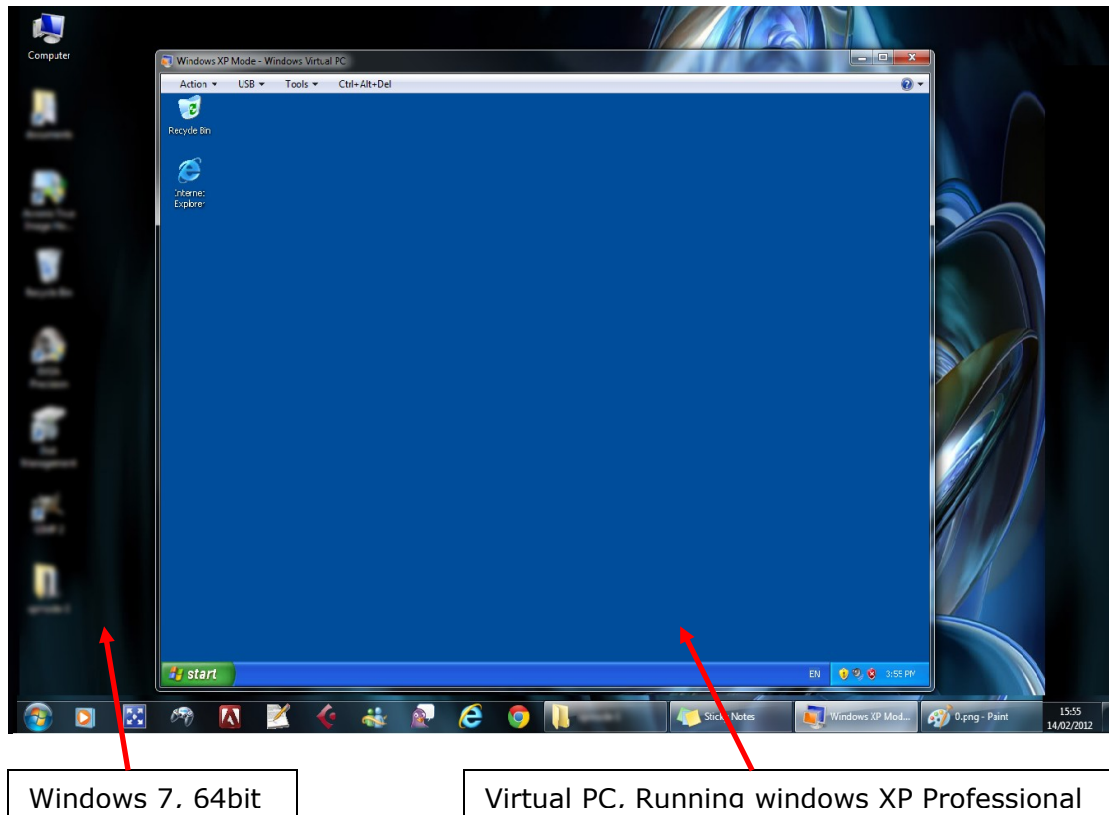
After clicking the "Start Setup" button the configuration process will now be and you must wait for it to complete.



Once completed, Windows XP Mode will launch automatically (See using Windows XP Mode).

Using Windows XP Mode

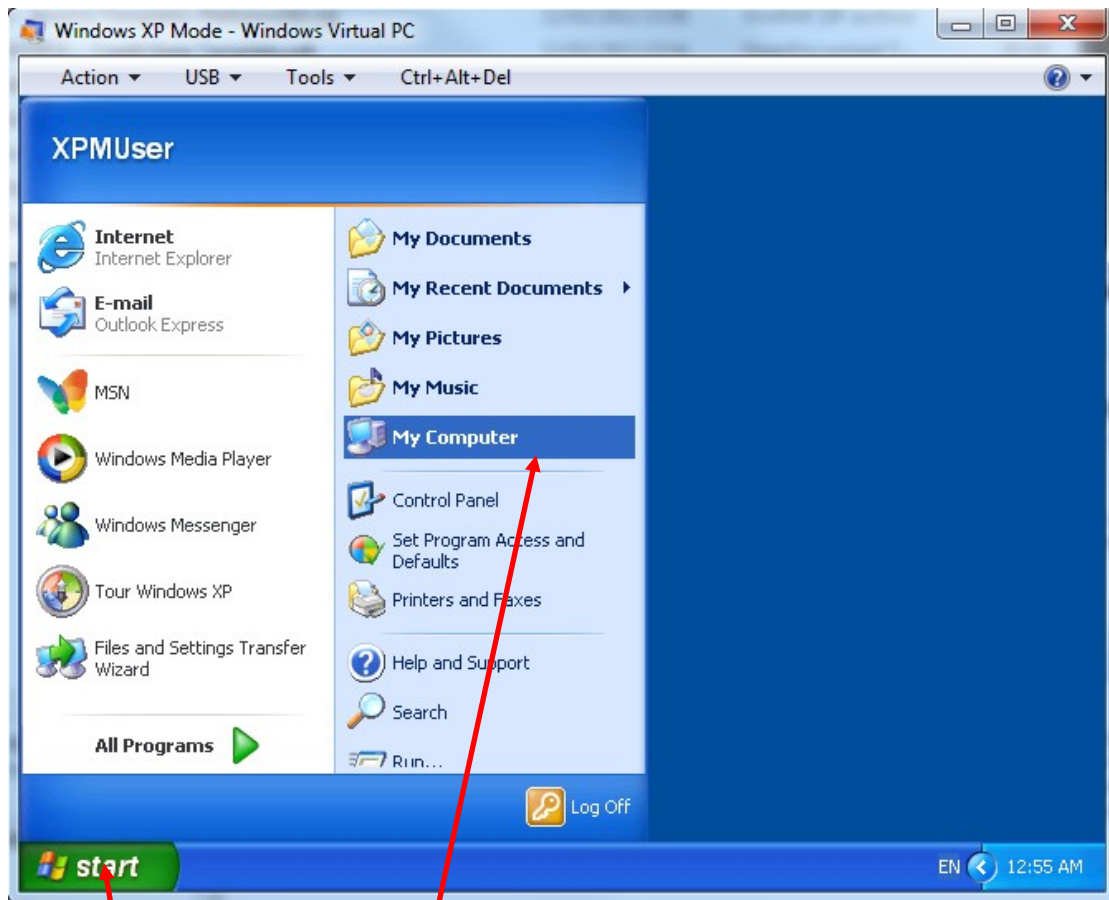
The screen shot below shows Windows XP Mode running. You can see a virtual copy of the Microsoft Windows XP operating system running inside of Windows 7.



The virtual machine behaves exactly like a real Windows XP machine would. You may install software, browse folders and customise your desktop just as you would with any computer running Windows XP.

Tip: Many people prefer to change the theme to "Windows Classic" as they find the default windows theme to be rather out dated and ugly. To do this click the "Start Menu", go to "Control Panel", select "Display" then on the themes tab choose "Windows Classic". Once selected click the "Apply" button then press "OK".

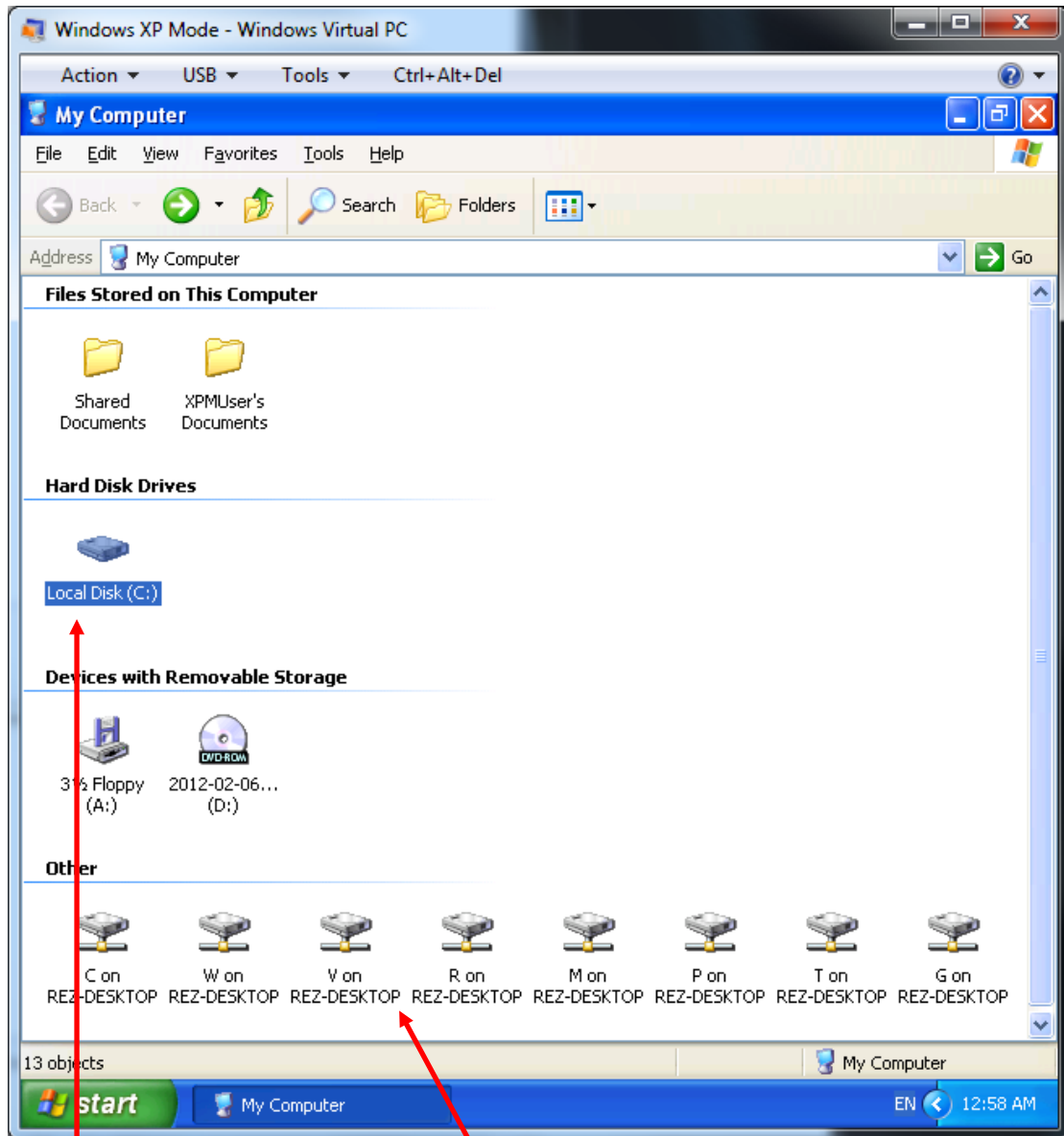
Clicking the start menu and the "My Computer" item will bring up a list of drives accessible to your virtual machine.



Start Menu

My Computer

You should notice that the virtual machine has access to all the available drives on your current Windows 7 computer as well as a local drive "Local Disk (C:)".



Local Disk

Drives available on your Windows 7 Machine

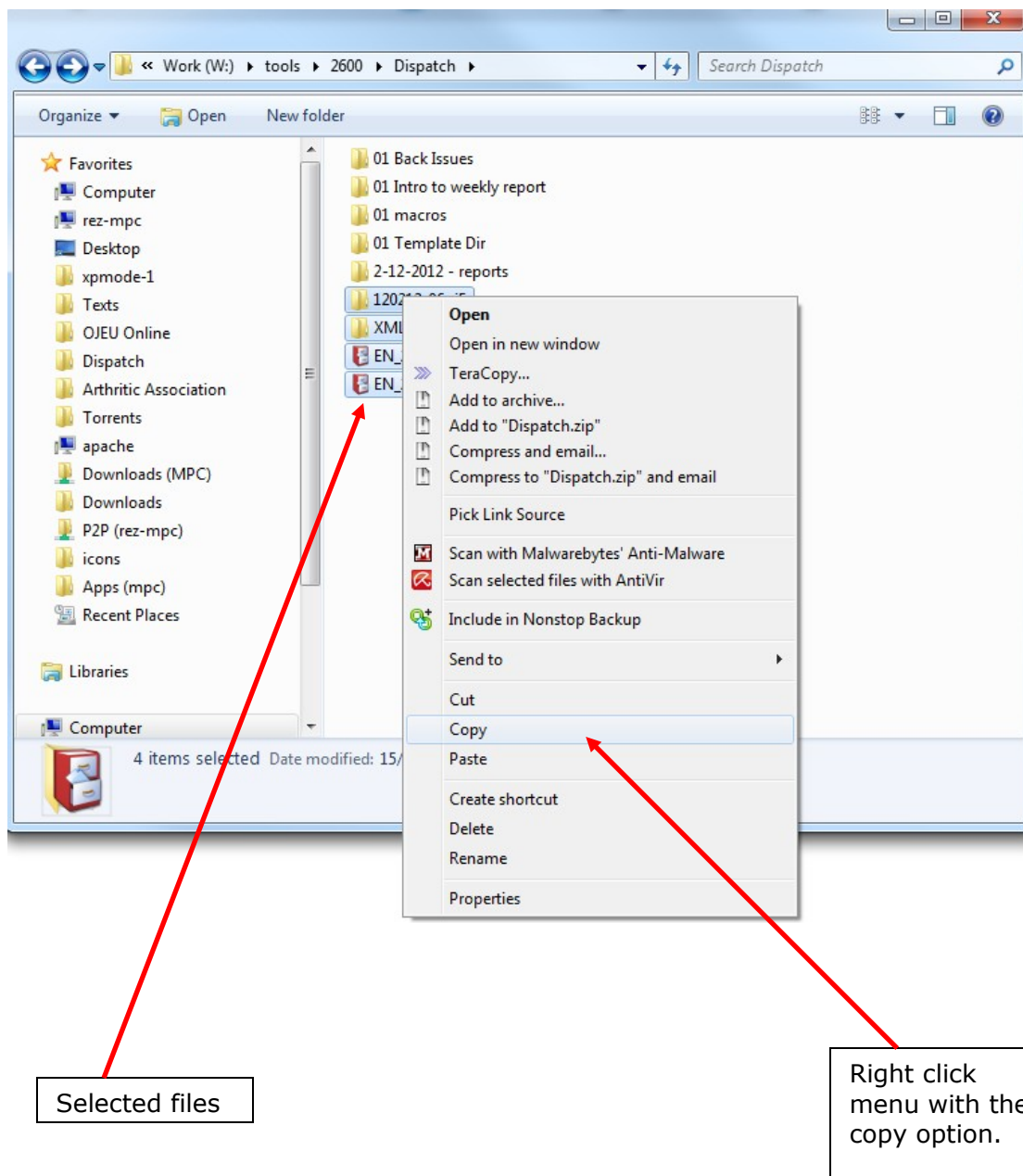
Copying Files to the Virtual Machine

If configured correctly you should be able to copy and paste files between both the virtual machine and your current copy of Windows 7.

To do this you can simply select the files and/or folders and by using the right click menu select copy.

The below example shows a selection of files selected in Windows 7 with the right click popup menu displayed. Note that this just shows a random selection of files it is not the OJEU software itself. You will need to locate and copy the OJEU software that you have previously downloaded to your Windows 7 computer.

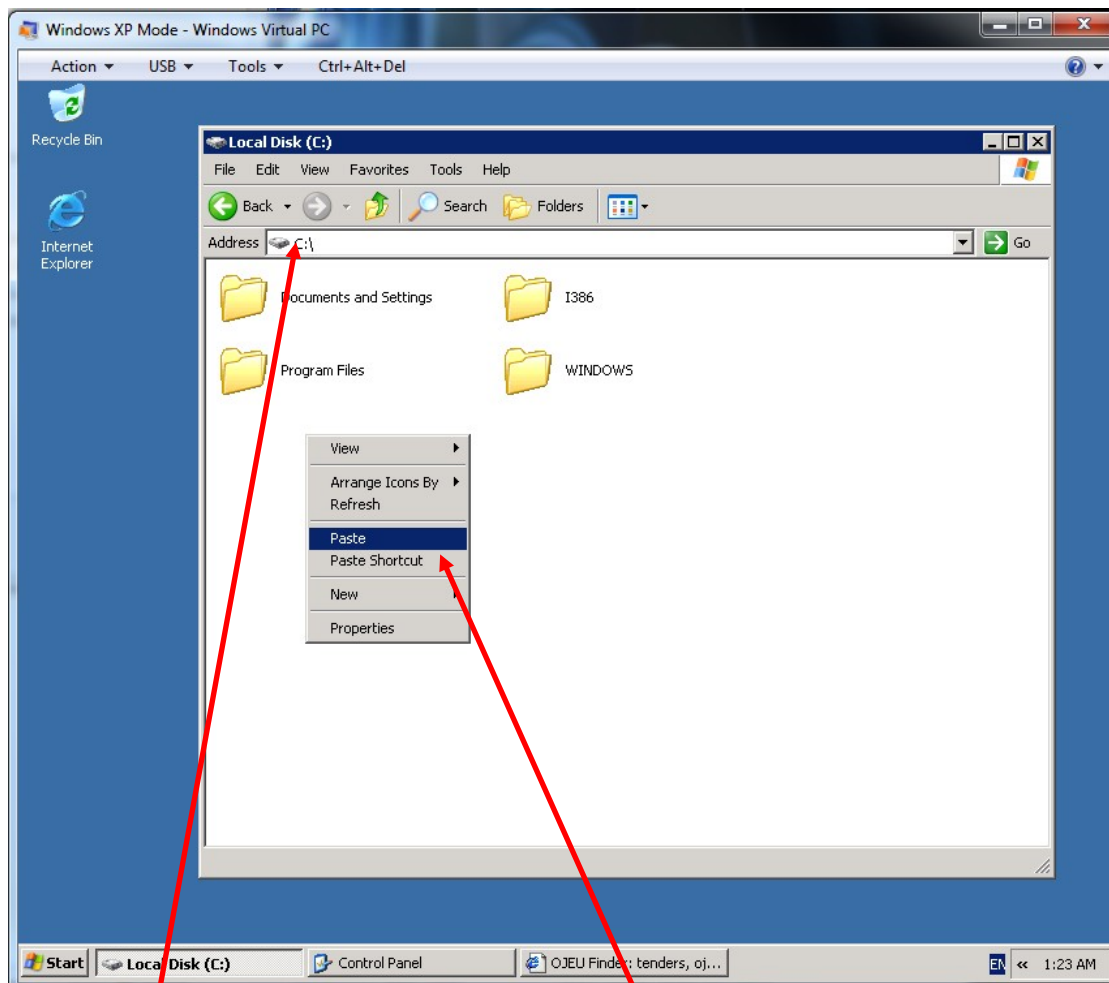
A Copy of the software can be obtained from our website (<http://ojeu.com>)



What you are going to need to do is to copy the OJEU software to the "Local Disk (C:)" on the virtual machine. This is where you will install the OJEU software. You will also need to extract and copy any database files into the OJEU software folder located on the virtual machine. To complete the copy option and paste the files to the virtual machine follow these steps.

On the virtual machine:

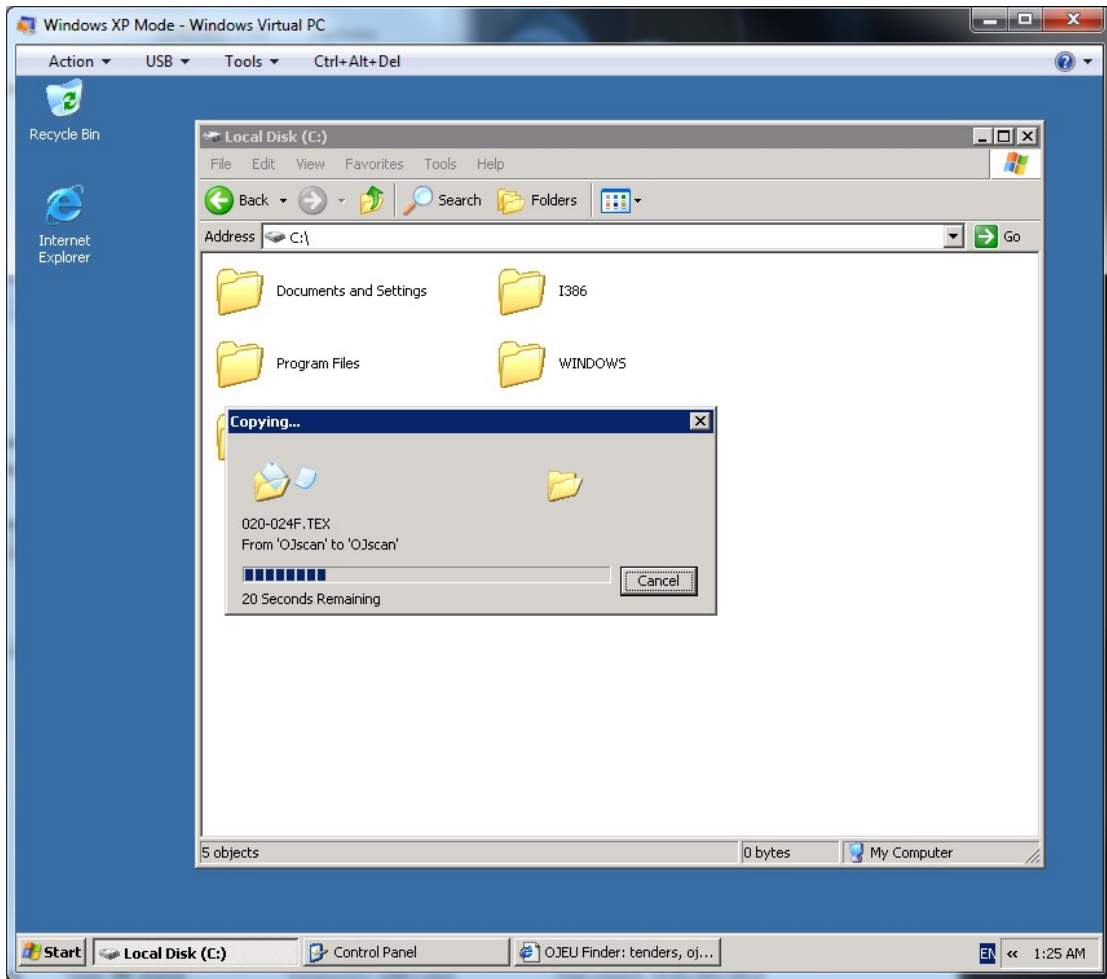
1. From the "My Computer" screen (seen above on page 10) double click on "Local Disk (C:)".
2. Right click a blank area of the screen (do not select a file or a folder) and select "Paste". This will then begin the process of copying the files to the virtual machine.



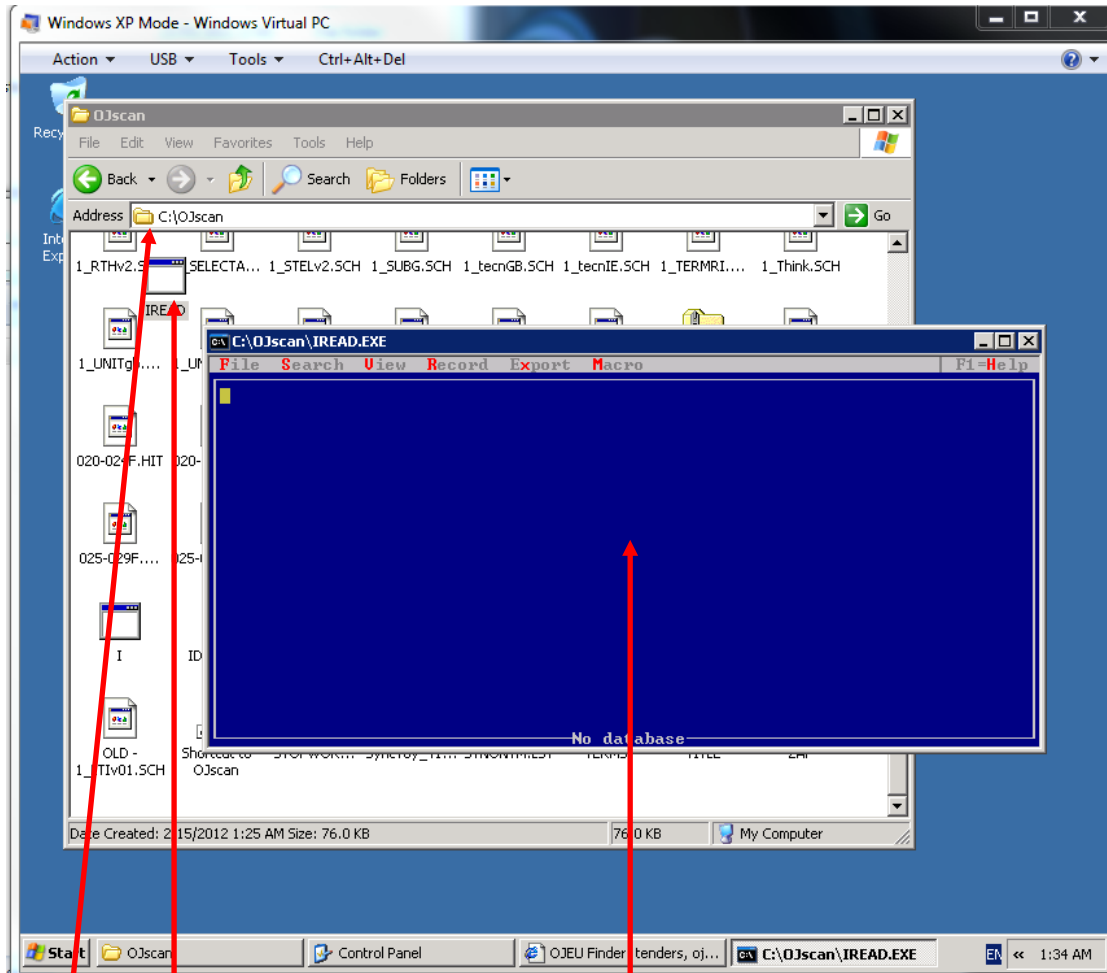
Displaying "Local Disk (C:)"

Right click menu, with paste option

The screen shot below shows the OJEU software successfully being copied over to the local C: on the virtual machine.



You should now be able to click on the OJScan folder that you have copied over to your virtual machine. Inside that folder you can find the program "IREAD". Double click on this file to launch the OJEU software. Please note you must also copy the database files into the OJScan folder in order to access them.



IRead application (OJEU Software)

OJScan Folder, located on "Local Disk (C:)"

IRead (OJEU Software) up and running inside the virtual machine,

Optional Installation Method

As the virtual machine works exactly like a real Windows XP computer it is also possible to download and install the OJEU software and database files directly from the web. To do this simply click on the start menu, launch "Internet Explorer", and go to our home page at ojeu.com. There you may download the software directly to your virtual machine. You may also download the database links (which are emailed to you on a weekly basis) in this way. You may prefer to use this method to save time copying files back and forth between your Windows 7 PC and your Virtual PC running Windows XP Mode.

The screen show shows Internet Explorer running inside the virtual machine.



Further Instructions for using the OJEU software.

Instructions for using the OJEU software can be found on our website.